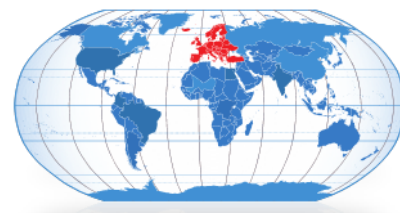


Product Information



261NY

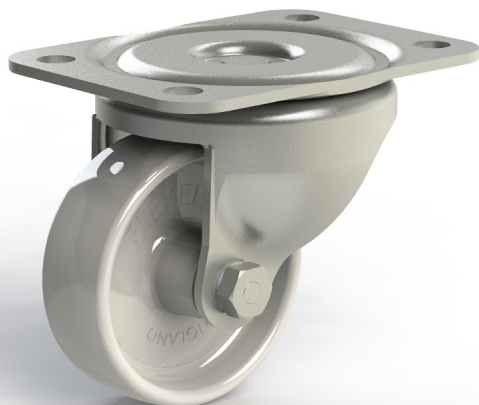
63mm Ball Bearing Swivel Castor

Pressed Steel Zinc Plated Fork

Pressed Steel zinc Plated top plate with 1/4" ball bearing swivel

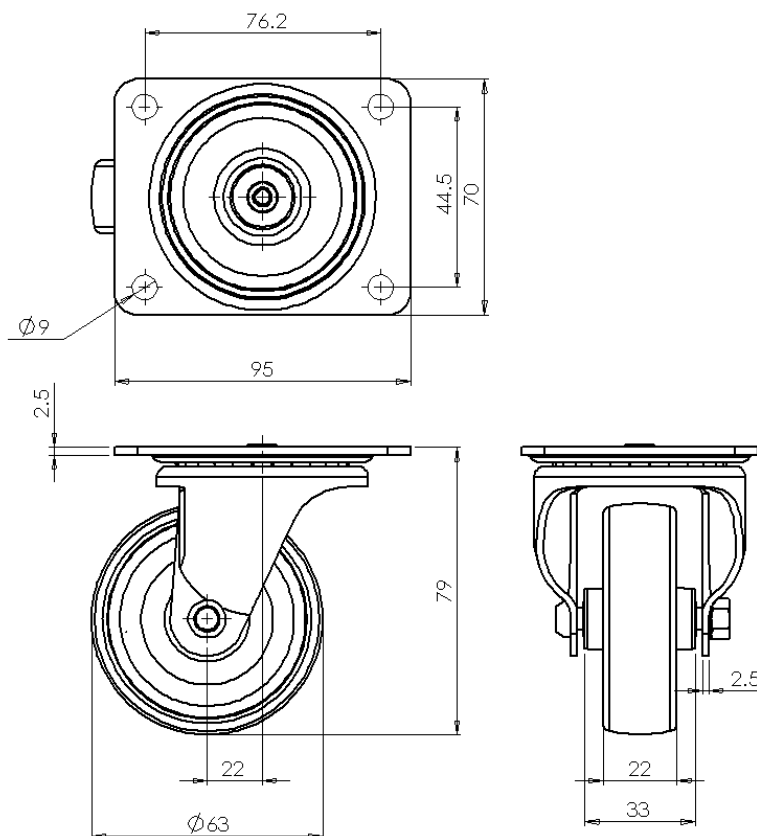
Nylon wheel with a plain bearing.

Bolt fixing M8



Technical Data

Wheel diameter	63mm
Wheel tread width	22mm
Hub width	33mm
Swivel radius	54mm
Offset	22mm
Body - colour	Zinc Plated
Wheel — colour	White
Tyre - colour	N/A
Load capacity (dynamic)	82Kg
Standard	ISO 22883



THE GLOBAL LEADER IN CASTORS AND WHEELS

Printed copies are uncontrolled, please refer to website for latest information www.colson-castors.co.uk

20/04/2015 Issue 1