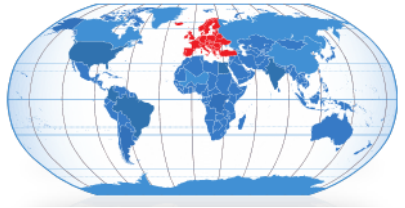


# Product Information

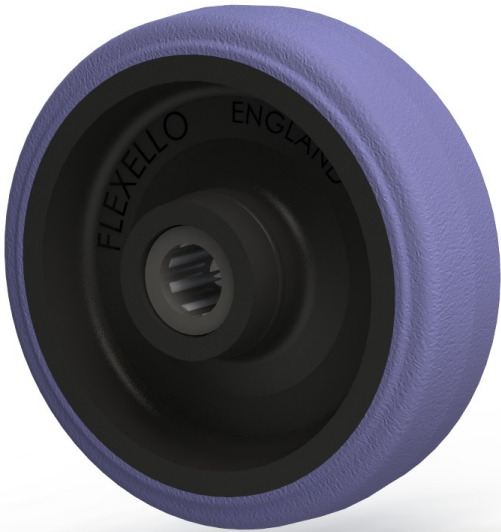


**WRN6RBM20**

## 6" (150mm) Wheel

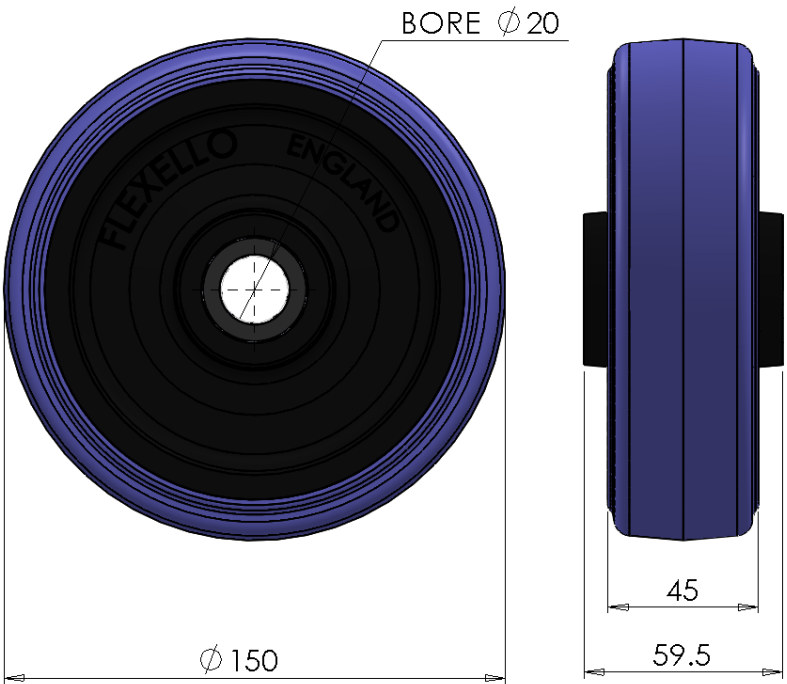
Nylon Wheel Centre with moulded Rubber tyre.

Fitted with a Roller Bearing



### Technical Data

Wheel diameter	150mm
Wheel width	45mm
Hub width	59.5mm
Bore diameter	20mm
Wheel — colour	Black
Tyre—colour	Blue
Load capacity (dynamic)	400Kg
Operating temp range	-10°C to 40°C



**THE GLOBAL LEADER IN CASTORS AND WHEELS**

Printed copies are uncontrolled, please refer to website for latest information [www.colson-castors.co.uk](http://www.colson-castors.co.uk)

20/04/2015 Issue 1